

## MICHIGAN

grow box - set



Growbox **MICHIGAN** encloses a fully automated system for growing plants INDOOR. Thanks to the controller you can **control all the most important parameters**, i.e. temperature, humidity, hydration, lighting as well as air circulation and ventilation. The system is compatible with mobile devices - **You are always on-line with your crop.**



## MICHIGAN MINI

growbox — set  
power: 550W / 230V  
weight: 47kg  
dimensions: 56,7 x 62,4 x 142 cm  
cultivation area: 52 x 50 cm



### The set includes:

- Control panel
- MOROCO 1 - COB illuminator
- GRAND ventilation
- Carbon filter
- Humidification and mixing module
- 300W heater
- attachments for the plant mesh
- lamp mounting brackets
- key lock
- CO<sub>2</sub> generator

Will fit 4 pcs of 11l pots.

## MICHIGAN MAX

growbox — set  
power: 700W / 230V  
weight: 110kg  
dimensions: 111,5 x 69,2 x 205 cm  
cultivation area: 106 x 60 cm



### The set includes:

- Control panel
- MOROCO 3 - COB illuminator
- GRAND ventilation
- Carbon filter
- Humidification and mixing module
- 300W heater
- attachments for the plant mesh
- lamp mounting brackets
- key lock
- CO<sub>2</sub> generator

Will fit 6 pcs of 11l pots.

In order to meet the expectations of our customers, we have prepared a self-contained vertical hydroponic growing system. With the latest solutions, we were able to combine an efficient lighting system (COB LED) with a very quiet ventilation and irrigation system in a very creative way.

Our **MONT** hydroponic hanging garden is made of high quality materials and can take the hearts of the most demanding customers away. The **MALTA** mini greenhouse is an automatic device with which you can grow fresh and aromatic vegetables and herbs in your own home in an ecological and very pleasant way.

From now on, your favorite flowers and vegetables can be an unusual decoration, regardless of the type of interior.

## MONT

vertical hydroponic system

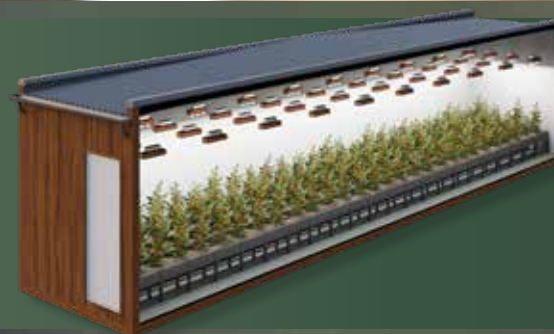
## MALTA

mini greenhouse

## ARTIPLANT

container for growing plants

dimensions:  
• 12 x 2,5 m



The Artiplant series containers have been adapted for industrial plant cultivation. Choose a professional type of lighting between lamps:

- MOROKO - COB
- MILANO - HPS

## MOTTO

sowing cubes

cell dimensions:  
30 x 30 x 30 mm

- tray 12 - 150x195x30 mm
- tray 24 - 290x195x30 mm
- tray 72 - 290x580x30 mm



Motto cubes - 100% natural and ecological are a mixture of specially frozen peat, coconut fiber, alpaca fertilizer, moisture-retaining material and a carefully selected plant substance. All these ingredients combined in the right proportions have made our MOTTO the best seeding cubes on the horticultural market. They provide excellent air and water flow, so that the roots can grow from the very beginning of the plant growth phase. It's the perfect solution for your plants.

## ONTARIO

specialized air handling units



### Create ideal air parameters for your plants.

Personalize our air handling unit with the help of our specialists to directly suit your cultivation needs. Thanks to the **ONTARIO** control panel dedicated to greenhouses and arable halls, you will protect your plants against insect invasion, fungal growth and maintain a constant temperature and an appropriate level of CO<sub>2</sub>.

For more info visit [grenfox.com](https://grenfox.com)

Gren Fox S.A., ul. Główna 188, 42-280 Częstochowa  
(34) 370 31 05, [info@grenfox.com](mailto:info@grenfox.com), [grenfox.com](https://grenfox.com)

The offer is for information purposes and does not constitute an offer within the meaning of art. 66 §1 of the Civil Code. Pictures presented in the catalog are for illustration only. The final product may slightly differ from the one presented in the picture. The manufacturer reserves the right to change product parameters.  
Catalog date: May 2020



gren fox  
MASTER OF GROWING

We want to return to nature



## MAROKO

COB downlight  
Designed and tested for the  
INDOOR cultivation

Reliable LEDs from the prestigious Japanese  
brand **Citizen** — perfect reproduction of  
the light spectrum necessary to maximize  
plant development  
**Service life**> 80,000 h -  
9 years of operation

Hanging brackets make it easy  
to adjust the height of the light  
source

Degree of protection incl. against the  
harmful effects of water ingress **IP 44**

Light colour **3500K**  
Spectrum range: **410 - 780 nm**

**Borosilicate** Lenses,  
transparency **over 97%**.  
Heat resistant. 120° beam angle  
(90° version available)

Potentiometer for smooth power  
regulation in the range **10-100%**  
for full control over plant growth

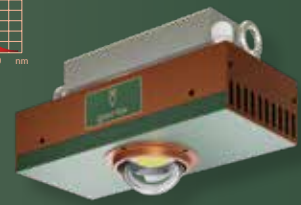
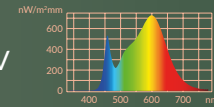
Swiss cooling fan with ball  
bearing — **Arctic** ensures quiet  
operation of the device

A reputable brand power supply  
**Mean Well** — stable power supply  
guarantee



### MAROKO 1

power: 150W / 230V  
weight: 3,2 kg  
lumen: 26,000 lm  
light color: 3500 K  
HPS equivalent - 200W



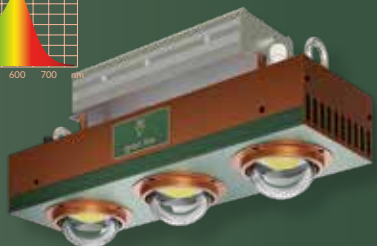
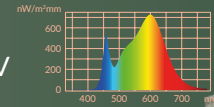
30 cm  
60 cm  
90 cm  
100 cm



990 µmol/m²s  
275 µmol/m²s  
158 µmol/m²s  
100 µmol/m²s

### MAROKO 3

power: 320W / 230V  
weight: 5,2 kg  
lumen: 52,000 lm  
light color: 3500 K  
HPS equivalent - 600W



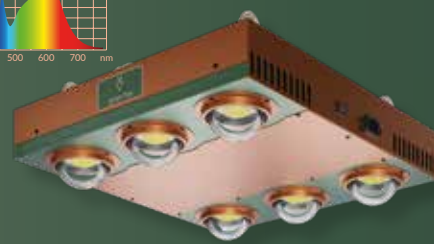
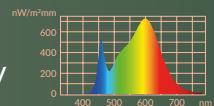
30 cm  
60 cm  
90 cm  
100 cm



2138 µmol/m²s  
645 µmol/m²s  
363 µmol/m²s  
280 µmol/m²s

### MAROKO 6

power: 640W / 230V  
weight: 12 kg  
lumen: 104,000 lm  
light color: 3500 K  
HPS equivalent - 1200W



30 cm  
60 cm  
90 cm  
100 cm

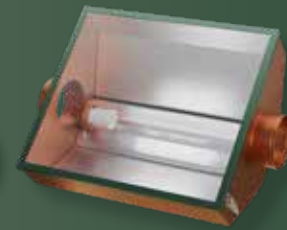


2751 µmol/m²s  
1125 µmol/m²s  
656 µmol/m²s  
629 µmol/m²s

## MILANO

HPS ventilated reflector hood  
**IP 44**

- Ø 125 / 520 mm
- Ø 150 / 520 mm
- Ø 150 / 615 mm
- Ø 200 / 615 mm



Ventilated **MILANO** reflector allows the heat to be  
emitted outside, which allows lowering the temperature  
for easier cultivation of your plants. It has a  
system for adjusting the angle of the reflective surface.  
The whole system has been enclosed in a solid  
and designer casing, having a 4 mm thick tempered  
glass with ground edges.

The E40 socket enables the use of HPS / MH lamps.  
Adapted to lamps: **250W / 400W / 600W / 1000W**

## COLORADO

HPS non-ventilated  
reflector hood

- HPS NW 250W - 1000W

**IP 44**

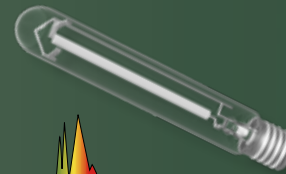
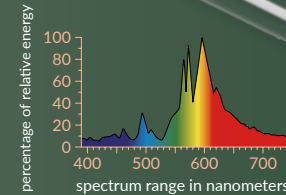


Made of special sheet metal, it effectively reflects  
light, spreading it evenly. Thanks to its relatively  
light weight and mounting holes the **COLORADO**  
lamp installation is not bothersome.

## SODIUM LAMP

2000K color temperature

- HPS 250 W 30 000 lm
- HPS 400 W 50 000 lm
- HPS 600 W 82 000 lm
- HPS 1000 W 125 000 lm



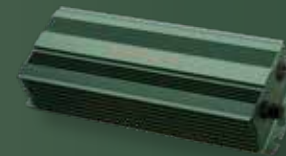
- specialized coating of arc pipes
- patented durable construction
- perfect uniformity of light output
- extended lifetime
- uncompromising light quality
- reduced color shift
- exceptional maintenance of Lumen level
- additional UV radiation

## POWER SUPPLY

for HPS reflectors

**IP 44**

- 600W / 230V  
modes: 250W / 400W / 600W / 660W



- for HPS / MH lights
- 20% more lumens than in  
conventional power supplies
- does not overheat
- lightweight design
- effective energy consumption
- model with dimmable lamp control

## ETER

clip-on axial fan

**IP 44**

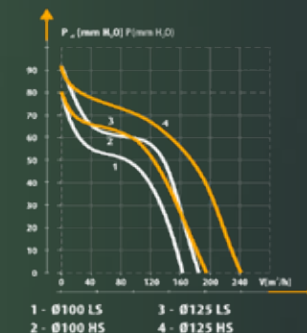
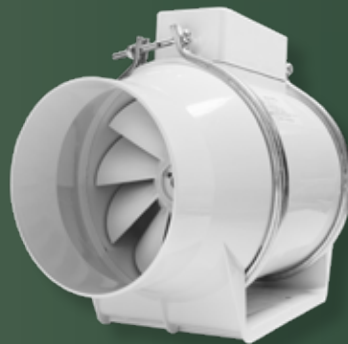


- Ø 100 m³/h: 100 moc: 15W
- Ø 150 m³/h: 280 moc: 20W

## SPEED

duct fan

- Ø 100 m³/h: 180HS / 160LS
- Ø 125 m³/h: 240HS / 195LS



## MAGNUM

Carbon filter*	Coal	Carbon free dough [g]	Carbon mass [g]	Filter weight [g]	optimal flow m³ / h	maximum flow m³ / h
Ø100 180/180	CTC 80	1094	1234	2328	190	250
Ø100 180/250	CTC 80	1314	1686	3000	250	380
Ø100 180/400	CTC 80	1600	2834	4434	390	500
Ø100 330/135	CTC 80	1914	5036	6950	200	250
Ø100 330/250	CTC 80	2398	9214	11612	390	450
Ø125 180/180	CTC 80	1148	1200	2348	180	300
Ø125 180/250	CTC 80	1344	1354	2698	220	380
Ø125 180/400	CTC 80	1768	2672	4440	390	500
Ø125 230/135	CTC 80	1382	1614	2996	220	270
Ø125 230/250	CTC 80	1733	2787	4520	400	460
Ø150 230/400	CTC 80	2500	3918	6418	510	920
Ø150 230/650	CTC 80	3428	6370	9798	750	1100
Ø160 230/400	CTC 80	2670	3546	6216	510	940
Ø160 230/650	CTC 80	3694	5696	9390	750	1200
Ø200 280/500	CTC 80	3820	6440	10260	820	1100
Ø200 280/800	CTC 80	5314	10396	15710	1100	1400
Ø250 330/500	CTC 80	4642	8118	12760	1000	1500
Ø250 330/750	CTC 80	6110	11950	18060	1500	2300

\*Service life from 12 to 18 months.

Double-flow patent™



**Number 1 in the world !!!** Thanks to **Double-flow patent™** technology  
using **Carbon Max\***. A revolutionary construction solution  
of the filter due to the use of unique guide vanes, which double  
the length of the airflow path through the carbon bed, which in  
turn doubles the absorption surface of the filtered air. The unrivaled  
patent means that the entire filter surface is used to clean  
the air. The great performance of our **MAGNUM** filter has been  
closed in a much smaller housing compared to the competition.

\*Carbon MAX = Maximum active carbon surface = Maximum  
Absorption of unwanted odors.

## GRAND

**IP 44**



3-speed (I / II / III) radial duct fan  
with speed control

- Ø 100 m³/h: I-224 / II-324 / III-400
- Ø 125 m³/h: I-252 / II-365 / III-450
- Ø 150 m³/h: I-297 / II-429 / III-530
- Ø 160 m³/h: I-308 / II-445 / III-550
- Ø 200 m³/h: I-588 / II-864 / III-1200
- Ø 250 m³/h: I-944 / II-1312 / III-1600
- Ø 315 m³/h: I-1342 / II-1826 / III-2200

Match MAGNUM to GRAND - table at grenfox.com

## TACIT

silencer



Gren Fox has added the **TACIT** acoustic silencer to its range  
for greater convenience when using ventilation equipment.  
The latest solution is aimed at customers who need safety,  
acoustic comfort and reliability in operation. The construc-  
tion of the shock absorbers is made of galvanized steel, which  
is filled with a non-flammable material and has a layer that  
protects the fibers from falling for a very long service life. The  
silencer is compatible with circular ventilation ducts with di-  
ameters from 100 to 200 mm. **TACIT** can be installed regard-  
less of the direction of the air flow.

	125	250	500	1000	2000	4000	8000
• Ø 100 180/500	7	12	24	37	45	35	24
• Ø 100 180/500	6	10	21	42	47	27	17
• Ø 150 230/650	3	5	10	17	25	32	17
• Ø 160 230/650	6	9	28	34	33	23	19
• Ø 200 280/800	5	11	20	30	35	20	21
• Ø 250 330/800	3	12	18	25	30	24	18

Why tacitly?  
Because at Gren Fox we believe you deserve a little rest ...

## Gren Fox SYSTEM

elements for ventilation



**Gren Fox SYSTEM** is a set of 30 different elements used  
to configure the ventilation system for a specific project.

Full range available on the site

grenfox.com